

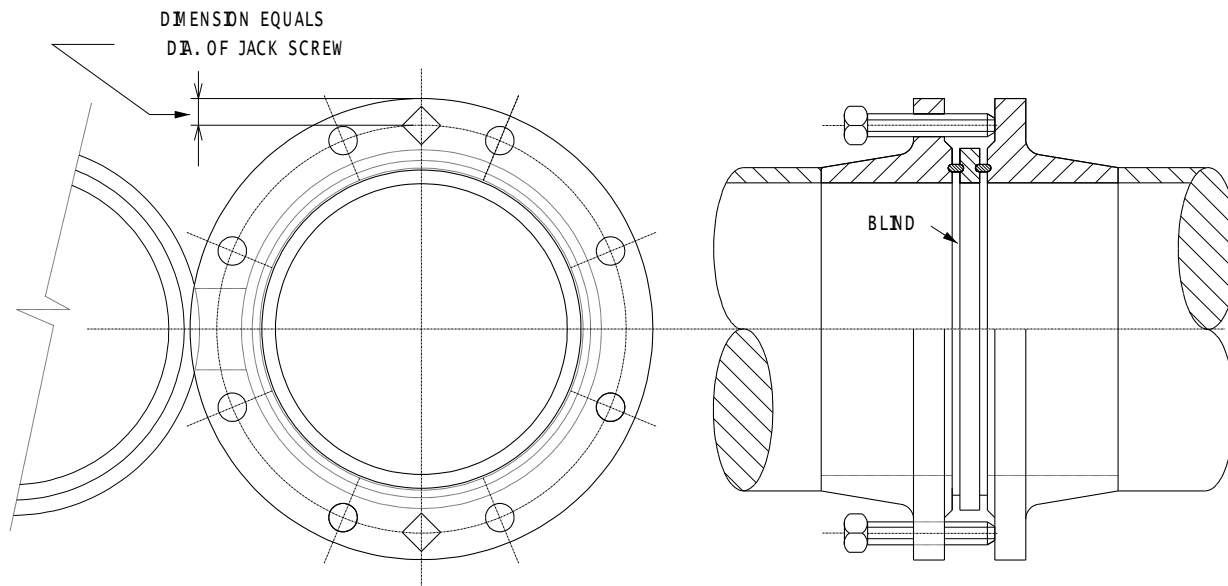
NOTES:

1. JACK SCREWS SHALL BE SQUARE HEAD CUP POINT CASE HARDENED STEEL SET SCREWS, U.N.C. THREAD FULL LENGTH.

2. SHOP FABRICATOR SHALL LOCATE AND INSTALL JACK SCREWS AS NOTED ON THE PIPE SPOOL AND IN ACCORDANCE WITH THIS DRAWING.

PIPE SIZE	RATING			
	150#RF/FF JACK SCREW SIZE	300#RF JACK SCREW SIZE	600#RF JACK SCREW SIZE	900#RF JACK SCREW SIZE
1 1/2"	16*89	16*89	16*102	16*114
2"	16*102	16*114	16*114	16*114
3"	16*102	16*114	16*114	16*127
4"	16*102	19*127	19*114	19*127
6"	19*102	19*127	19*114	19*140
8"	19*102	19*127	19*127	19*152
10"	19*102	19*127	19*140	19*152
12"	19*102	25*127	19*152	25*165
14"	19*102	25*127	25*165	25*178
16"	19*102	25*127	25*178	25*191
18"	25*114	25*127	25*191	25*216
20"	25*114	25*140	25*203	25*229
24"	25*140	25*152	25*229	25*279
	API-605	API-605	API-605	API-605
30"	19*127	25*191	25*229	38*292
36"	19*127	25*229	32*254	51*305
42"	19*152	32*279	32*305	64*343
48"	25*159	32*279	38*318	64*368

JACK SCREWS
SIZE SELECTION AND
INSTALLATION
DETAIL FOR FF AND RF



NOTES:

1. JACK SCREWS ARE NOT REQUIRED FOR SIZES BELOW HEAVY LINE-FLANGE SPREADERS ARE TO BE USED IN LIEU OF JACK SCREWS.
2. JACK SCREWS (IF REQUIRED) SHALL BE SQUARE HEAD CUP POINT CASE HARDENED STEEL SET SCREWS, U.N.C. THREAD FULL LENGTH.
3. SHOP FABRICATOR SHALL LOCATE AND INSTALL JACK SCREWS AS NOTED ON THE SPOOL, AND IN ACCORDANCE WITH THIS DRAWING.

PIPE SIZE	RATING					
	150#R.J. JACK SCREW SIZE	300#R.J. JACK SCREW SIZE	600#R.J. JACK SCREW SIZE	900#R.J. JACK SCREW SIZE	1500#R.J. JACK SCREW SIZE	2500#R.J. JACK SCREW SIZE
1 1/2"	16*89	16*89	16*102	16*102	16*102	16*127
2"	16*102	16*102	16*114	16*127	16*127	19*140
3"	16*102	16*114	16*127	16*127	19*140	19*165
4"	19*102	19*127	19*140	19*140	19*152	19*191
6"	19*102	19*127	19*152	19*152	19*191	25*254
8"	19*102	19*152	19*165	19*165	25*229	32*292
10"	19*102	19*152	19*178	19*178	25*254	32*368
12"	25*114	25*165	25*191	25*203	32*292	38*406
14"	25*114	25*165	25*191	25*229	32*318	-
16"	25*114	25*178	25*203	25*241	32*356	-
18"	25*127	25*178	25*229	25*267	32*381	-
20"	25*127	25*203	25*267	32*279	38*419	-
24"	25*140	25*216	32*279	32*356	38*483	-

JACK SCREWS
SIZE SELECTION AND
INSTALLATION
DETAIL FOR R.J.