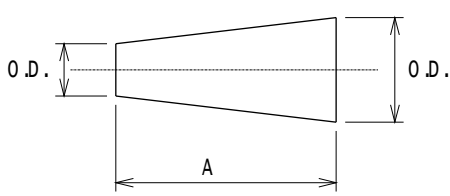
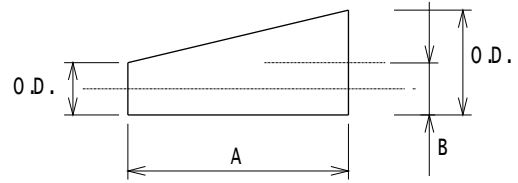


SPECIAL FABRICATED LARGE DIA. CONC. & ECC. REDUCERS



CONCENTRIC



ECCENTRIC

REDUCER	A	B	REDUCER	A	B	REDUCER	A	B	REDUCER	A	B
O.D.			O.D.			O.D.			O.D.		
26*24	610	25	34*24	610	127	44*42	610	25	52*50	610	25
26*22	610	50	36*34	610	25	44*40	610	50	52*48	610	50
26*20	610	75	36*32	610	50	44*38	610	75	52*46	610	75
26*18	610	102	36*30	610	75	44*36	610	102	52*44	610	102
* 26*16	610	127	* 36*28	610	102	* 44*34	610	127	52*42	610	127
28*26	610	25	36*26	610	127	* 44*32	610	152	52*40	610	152
28*24	610	50	36*24	610	152	46*44	610	25	52*38	610	178
* 28*22	610	75	38*36	610	25	46*42	610	50	52*36	610	203
28*20	610	102	38*34	610	50	46*40	610	75	54*52	762	25
28*18	610	127	38*32	610	75	46*38	610	102	54*50	762	50
30*28	610	25	38*30	610	102	* 46*36	610	127	54*48	762	75
30*26	610	50	38*28	610	127	* 46*34	610	152	54*46	762	102
30*24	610	75	38*26	610	152	48*46	610	25	54*44	762	127
* 30*22	610	102	40*38	610	25	48*44	610	50	54*42	762	152
30*20	610	127	40*36	610	50	48*42	610	75	54*38	762	203
32*30	610	25	40*34	610	75	48*40	610	102	54*36	762	229
32*28	610	50	40*32	610	102	* 48*38	610	127	54*34	762	254
32*26	610	75	40*30	610	127	* 48*36	610	152	54*32	762	279
32*24	610	102	* 40*28	610	152	50*48	610	25	54*30	762	305
* 32*22	610	127	42*40	610	25	50*46	610	50	56*54	762	25
* 32*20	610	152	42*38	610	50	50*44	610	75	56*52	762	50
34*32	610	25	42*36	610	75	50*42	610	102	56*50	762	75
34*30	610	50	42*34	610	102	50*40	610	127	56*48	762	102
* 34*28	610	75	42*32	610	127	50*38	610	152	56*46	762	127
* 34*26	610	102	42*30	610	152	50*36	610	178	56*44	762	152

1. THESE REDUCERS ARE TO BE USED ONLY WHEN AUTHORIZED BY THE PIPING SPEC' S FOR THE JOB.

2. MATERIAL SHALL BE AS SPECIFIED IN THE JOB PIPING MATERIALS SPECIFICATION CLASS.

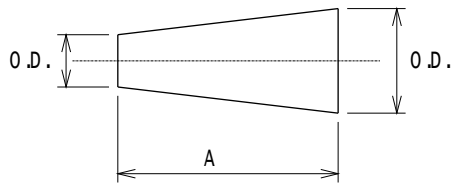
3. WELDING SHALL BE IN ACCORDANCE WITH JOB SPECIFICATIONS C-2 OR C-5.

4. ALLOY MATERIALS OVER 1/8" THICKNESS AND CARBON STEEL MATERIALS 3/16" THICK AND OVER SHALL HAVE ENDS BEVELLED FOR WELDING IN ACCORDANCE WITH SPEC. ANSI -B16.25.

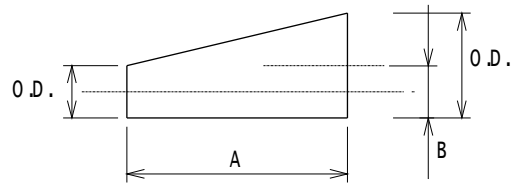
5. REDUCERS MARKED WITH ASTERISX AND 50" AND HIGHER ARE NOT ANSI -B16.9.

SPECIAL FABRICATED LARGE DIA. CONC. & ECC. REDUCERS

INTERNATIONAL STD. BI-CDS-45M			SPECIAL FABRICATED LARGE DIA. CONC. & ECC. REDUCERS
STD. BA-CD-39M			
ID. NO.	ISSUE	SHEET	DOC. NO.
	2	1 of 2	BN-DS-C62



CONCENTRIC



ECCENTRIC

REDUCER O.D.	A	B
56*42	762	178
58*56	762	25
58*54	762	51
58*52	762	76
58*48	762	127
58*44	762	178
58*42	762	203
60*56	762	51
60*54	762	76
60*52	762	102
60*48	762	152
60*42	762	229
62*58	762	51
62*54	762	102
62*52	762	127
62*48	762	178
62*44	762	229
64*60	914	51
64*56	914	102
64*54	914	127
64*52	914	152
64*48	914	203
64*42	914	279
66*60	914	76
66*54	914	152

REDUCER O.D.	A	B
66*48	914	229
66*42	914	305
68*64	914	51
68*60	914	102
68*54	914	178
68*48	914	254
68*42	914	330
70*66	1067	51
70*60	1067	127
70*54	1067	203
70*48	1067	279
70*42	1067	356
72*66	1067	76
72*60	1067	152
72*54	1067	229
72*48	1067	305
72*42	1067	381
78*72	1219	76
78*66	1219	152
78*60	1219	229
78*54	1219	305
78*48	1219	381
84*78	1219	76
84*72	1219	152
84*66	1219	229

REDUCER O.D.	A	B
84*60	1219	305
84*54	1219	381
84*48	1219	457
90*84	1219	76
90*78	1219	152
90*72	1219	229
90*66	1219	305
90*60	1219	381
96*90	1219	76
96*84	1219	152
96*78	1219	229
96*72	1219	305
96*66	1219	381

1. THESE REDUCERS ARE TO BE USED ONLY WHEN AUTHORIZED BY THE PIPING SPEC' S FOR THE JOB.
2. MATERIAL SHALL BE AS SPECIFIED IN THE JOB PIPING MATERIALS SPECIFICATION CLASS.
3. WELDING SHALL BE IN ACCORDANCE WITH JOB SPECIFICATIONS C-2 OR C-5.
4. ALLOY MATERIALS OVER 1/8" THICKNESS AND CARBON STEEL MATERIALS 3/16" THICK AND OVER SHALL HAVE ENDS BEVELLED FOR WELDING IN ACCORDANCE WITH SPEC. ANSI -B16.25.
5. REDUCERS ON THIS SHEET ARE NOT ANSI -B16.9.

INTERNATIONAL STD. BI-CDS-45M			SPECIAL FABRICATED LARGE DIA. CONC. & ECC. REDUCERS
STD. BA-CD-39M			
ID. NO.	ISSUE	SHEET	DOC.NO.
	2	2 of 2	BN-DS-C62