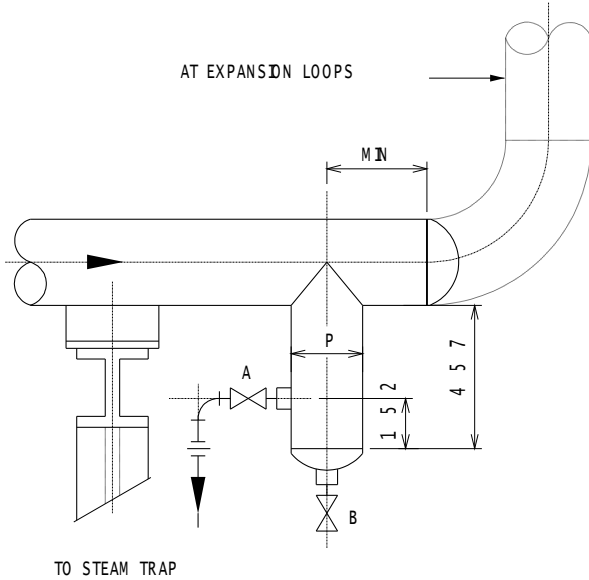


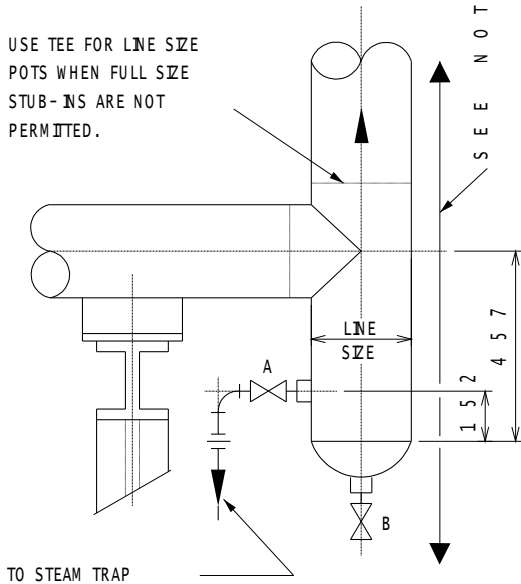
**CONDENSATE POTS
FOR STEAM MAINS**

ALL DIMENSION ARE INCHES



DETAIL " A "
AT ENDS OF HEADERS

USE TEE FOR LINE SIZE
POTS WHEN FULL SIZE
STUB-INS ARE NOT
PERMITTED.



DETAIL " B "
AT CHANGE OF DIRECTION
EXCEPT AT EXPANSION LOOPS

LINE SIZE	POT-SIZE P	SIZE-GATE VALVE "A"	SIZE-GATE VALVE "B"
3	2	3/4	3/4
4	2	3/4	3/4
6	3	3/4	3/4
8	4	3/4	3/4
10	4	3/4	3/4
12	4	3/4	3/4
14-24	6	3/4	1

Notes :

- 1.Piping materials shall be in accordance with the specific piping classification used for the main.
- 2.Where steam mains are located at grade, a valve box shall be provided for the drip pot and steam trap. This box shall be of sufficient size to permit access for servicing and may be of wood, concrete or other materials to suit local preference and soil conditions at the location involved. The valve box shall be provided with a suitable cover and all valves equipped with extension stems to permit operation from ground level.
- 3.Valve "A" is not normally required if block valve at trap is within 3000 of pot.
- 4.Locate pots as close to pipe support as possible to facilitate servicing.
- 5.Provide round bar stock plug at valve "B" where main is installed overhead on pipe supports.
- 6.See Std. BA-DG-C11 for Standard trap assemblies.
- 7.Leave sufficient space clear of connections and/or attachments to allow adding pipe support when applicable.
- 8.See Std. BN-DS-C53 and BA-CD-59M for condensate pots at control valve manifolds.