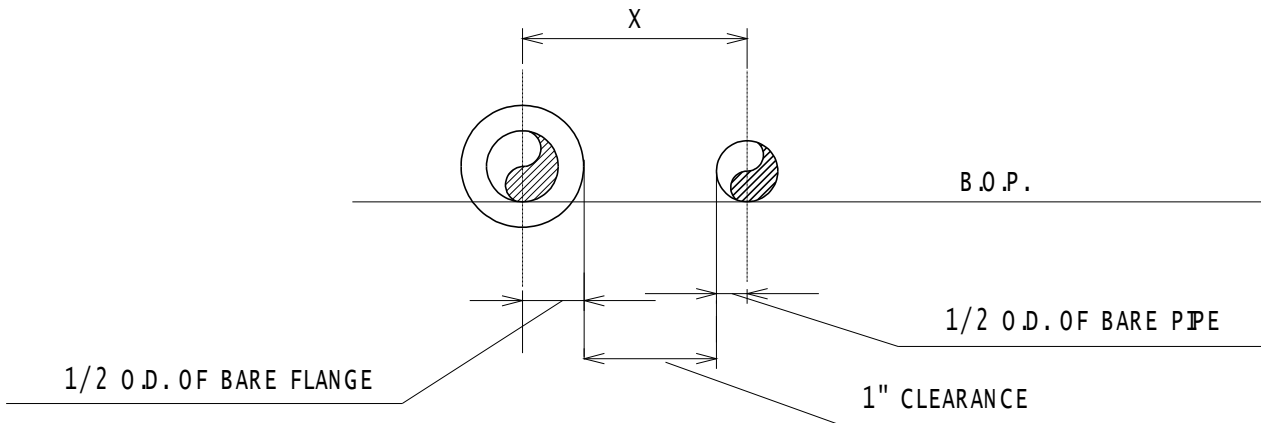


INTERNATIONAL STD. BI-CDS-1M		
STD. BA-CD-2M		

**NOTES :**

1. Basis of dimensions on standard charts utilizing English units :
  - a) Bare pipe (of smaller size) to bare flange (of larger pipe size) plus (+) one (1) inch clearance for spacing between lines with the same pressure rating. When determining spacing between lines with different pressure ratings, assume the largest line size to have the highest pressure rating.



- b) “Round up” dimensions (fractions) to nearest inch above  $\frac{3}{8}$ ” and “round down” dimensions  $\frac{3}{8}$ ” and below to nearest inch.  
 e.g. When “x” calculates to  $10\text{-}\frac{1}{2}$ ”, “round up” to 11” and when “x” calculates to  $10\text{-}\frac{3}{8}$ ”, “round down” to 10”, minimum dimension of “x” equals 6” between centerlines of any two (2) pipes.
  - c) When selecting spacing for lines with different pressure ratings from the spacing tables, always refer to the table with the highest pressure rating.
2. For sizes and ratings greater than those tabulated, line spacing shall be calculated using the criteria as set forth in note 1.
3. Calculate the line spacing by adding the insulation thickness(es) to the dimension tabulated on sheets 2-7, when the pipe and/or flanges are insulated.
4. When orifice flanges are involved spacing may have to be increased.
5. When side movement is a factor due to expansion of hot lines, spacing must be increased accordingly.
6. Metric dimensions have been converted directly from the BA-CD-2 Standard utilizing 1” = 25.4 millimeters with dimensions “rounded up” to nearest ten (10) millimeters.

**PIPE SPACING STANDARD  
METRIC UNITS**

ID. NO.	ISSUE	SHEET	DOC.NO.
	2	1 of 7	BN-DS-C42

INTERNATIONAL STD. BI-CDS-1M		
STD. BA-CD-2M		

PIPE SIZE	1	1½"	2	3	4	6	8	10	12	14	16	18	20	24	30	36
36	640	640	640	670	670	690	720	740	770	790	820	840	870	920	1000	1070
30	540	540	560	560	590	610	640	670	690	690	720	740	770	820	890	
24	460	460	460	490	490	510	540	560	590	610	640	670	690	740		
20	410	410	410	440	440	460	490	510	540	560	590	610	640			
18	360	390	390	390	410	440	460	490	510	540	560	590				
16	360	360	360	390	390	410	440	460	490	510	540					
14	310	340	340	340	360	390	410	440	460	490						
12	280	310	310	310	340	360	390	410	440							
10	260	260	260	280	280	310	340	360								
8	230	230	230	260	260	280	310									
6	180	210	210	210	230	260										
4	160	180	180	180	210											
3	160	160	160	180												
2	160	160	160													
1½"	160	160														
1	160															

<b>PIPE SPACING STANDARD</b> <b>150# RATING</b> <b>DIMENSIONS IN MILLIMETERS</b>
--

INTERNATIONAL STD. BI-CDS-1M		
STD. BA-CD-2M		

PIPE SIZE	1	1½"	2	3	4	6	8	10	12	14	16	18	20	24	30	36
36	690	690	690	720	720	740	770	790	820	840	870	890	920	970	1050	1120
30	590	610	610	610	640	670	690	720	740	770	790	820	840	890	970	
24	510	510	510	540	540	560	590	610	640	670	690	720	740	790		
20	440	440	460	460	490	510	540	560	590	590	610	640	670			
18	410	410	410	440	440	460	490	510	540	560	590	610				
16	390	390	390	410	410	440	460	490	510	540	560					
14	340	360	360	360	390	410	440	460	490	510						
12	310	310	340	340	360	390	410	440	460							
10	280	280	280	310	310	340	360	390								
8	230	260	260	260	280	310	340									
6	210	210	230	230	260	280										
4	180	180	180	210	210											
3	160	160	160	180												
2	160	160	160													
1½"	160	160														
1	160															

PIPE SPACING STANDARD 300# / 400# RATING DIMENSIONS IN MILLIMETERS
--

INTERNATIONAL STD. BI-CDS-1M		
STD. BA-CD-2M		

PIPE SIZE	1	1½"	2	3	4	6	8	10	12	14	16	18	20	24	30	36
36	720	720	720	740	740	770	790	820	840	870	890	920	940	1000	1070	1150
30	610	610	640	640	670	690	720	740	770	770	790	820	840	890	970	
24	510	540	540	540	560	590	610	640	670	690	720	740	770	820		
20	460	460	460	490	490	510	540	560	590	610	640	670	690			
18	410	440	440	440	460	490	510	540	560	590	610	640				
16	390	410	410	410	440	460	490	510	540	560	590					
14	360	360	360	390	390	410	440	460	490	510						
12	340	340	340	360	360	390	410	440	460							
10	310	310	310	340	340	360	390	410								
8	260	260	280	280	310	340	360									
6	230	230	230	260	260	280										
4	180	180	210	210	230											
3	160	160	160	180												
2	160	160	160													
1½"	160	160														
1	160															

<p style="text-align: center;">PIPE SPACING STANDARD 600# RATING DIMENSIONS IN MILLIMETERS</p>
--

INTERNATIONAL STD. BI-CDS-1M		
STD. BA-CD-2M		

PIPE SIZE	1	1½"	2	3	4	6	8	10	12	14	16	18	20	24	30	36
36	790	790	790	820	820	840	870	890	920	940	970	1000	1020	1070	1150	1220
30	670	670	690	690	720	740	770	790	820	820	840	870	890	940	1020	
24	560	590	590	590	610	640	670	690	720	740	770	790	820	870		
20	490	490	490	510	510	540	560	590	610	640	670	690	720			
18	440	460	460	460	490	510	540	560	590	610	640	670				
16	410	410	410	440	440	460	490	510	540	560	590					
14	360	390	390	390	410	440	460	490	510	540						
12	360	360	360	390	390	410	440	460	490							
10	340	340	340	360	360	390	410	440								
8	280	280	310	310	340	360	390									
6	230	260	260	260	280	310										
4	210	210	210	230	230											
3	180	180	180	210												
2	160	160	180													
1½"	160	160														
1	160															

PIPE SPACING STANDARD 900# RATING DIMENSIONS IN MILLIMETERS
---

INTERNATIONAL STD. BI-CDS-1M		
STD. BA-CD-2M		

PIPE SIZE	1	1½"	2	3	4	6	8	10	12	14	16	18	20	24	30	36
36																
30																
24	640	640	640	670	670	690	720	740	770	790	820	840	870	920		
20	540	540	560	560	590	610	640	670	690	690	720	740	770			
18	510	510	510	540	540	560	590	610	640	670	690	720				
16	460	460	490	490	510	540	560	590	610	610	640					
14	440	440	440	460	460	490	510	540	560	590						
12	390	390	410	410	440	460	490	510	540							
10	340	360	360	360	390	410	440	460								
8	280	310	310	310	340	360	390									
6	260	260	260	280	280	310										
4	210	210	210	230	230											
3	180	180	210	210												
2	160	160	180													
1½"	160	160														
1	160															

<p style="text-align: center;">PIPE SPACING STANDARD 1500# RATING DIMENSIONS IN MILLIMETERS</p>
---

INTERNATIONAL STD. BI-CDS-1M		
STD. BA-CD-2M		

PIPE SIZE	1	1½"	2	3	4	6	8	10	12	14	16	18	20	24	30	36
36																
30																
24																
20																
18																
16																
14																
12	440	440	440	460	460	490	510	540	560							
10	390	390	410	410	440	460	490	510								
8	340	340	340	360	360	390	410									
6	280	310	310	310	340	360										
4	230	230	230	260	260											
3	210	210	210	230												
2	160	180	180													
1½"	160	160														
1	160															

PIPE SPACING STANDARD 2500# RATING DIMENSIONS IN MILLIMETERS
--