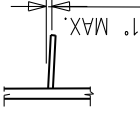
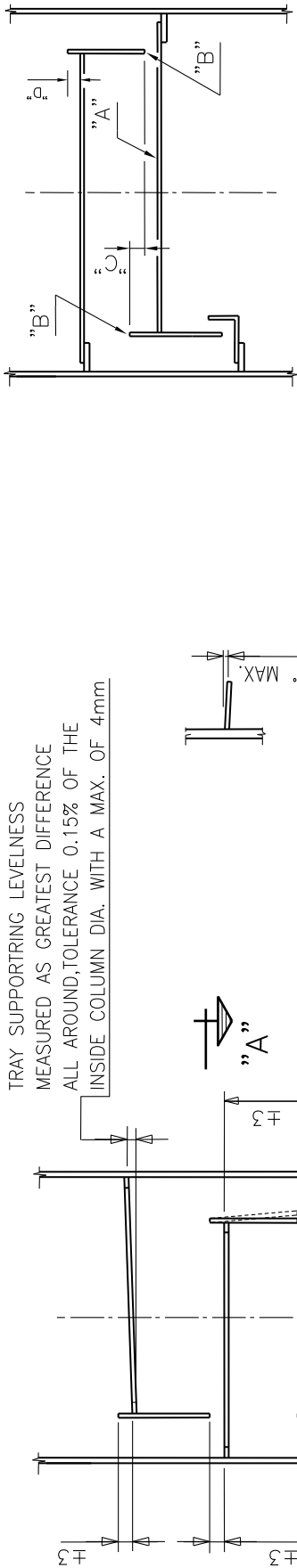
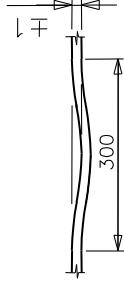


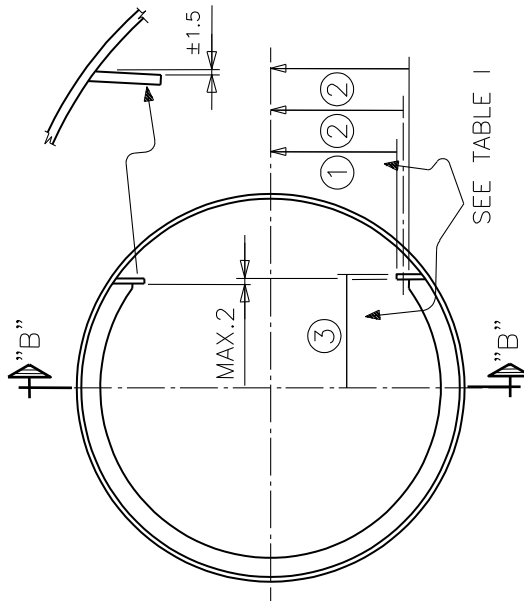
TRAY SUPPORTING LEVELNESS  
 MEASURED AS GREATEST DIFFERENCE  
 ALL AROUND, TOLERANCE 0.15% OF THE  
 INSIDE COLUMN DIA. WITH A MAX. OF 4mm.



TRAY SUPPORT RING  
 WARPING



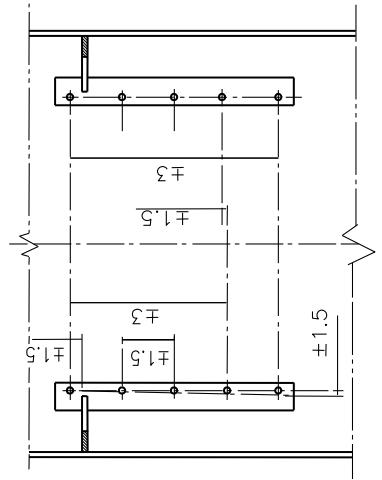
LOCAL DEPARTURES  
 TRAY SUPPORT RING



SECTION A-A

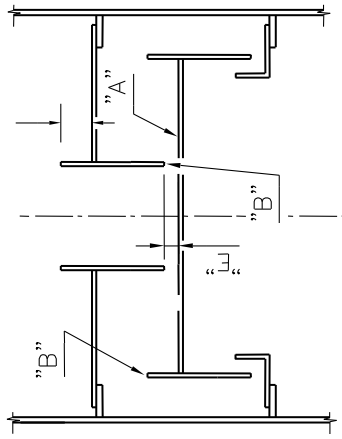
I.D. COLUMN	①	②	③
UP TO 1600	± 3	± 2	± 3
OVER 1600 TO AND INCL. 3000	± 5	± 3.5	± 4
OVER 3000	± 6	± 5	± 5

TABLE 1



SECTION B-B

SINGLE FLOW TYPE



DOUBLE FLOW TYPE

PART	TRAY PART	TOLERANCE
A	LEVEL AND FLATNESS OF TRAY FLOOR	I.D./900 1) 2)
B	LEVEL AND FLATNESS OF OUTLET WEIR AND DOWNCOMER I.D. ≤ 2100 I.D. > 2100	3 mm 5 mm
C	CLEARANCE BETWEEN OUTLET WEIR AND DOWNCOMER	± 3 mm
D	OUTLET WEIR HEIGHT	± 3 mm
E	CLEARANCE UNDER DOWNCOMER	± 3 mm

1) LEVEL AND FLATNESS OF TRAY FLOOR SHALL BE MEASURED AT EACH TRAY PASS.  
 2) WITH A MAX. OF 6 mm.

**CONSTRUCTION TOLERANCES  
 FOR  
 PRESSURE VESSELS**

BN-DS-A 3