

NEW DWG NO: BN-DG-K1-14

NOTES ADDITIONAL TO INSTRUMENT CONNECTIONS, ALREADY SHOWN ON SKETCH.

ACTION BY VESSEL DEPARTMENT  
 ACTION BY PIPING DEPARTMENT

THERMOWELL NOZZLES TO BE POSITIONED HORIZONTAL FOR: K1

ORIENTATE THE THERMOWELLS AND LEVEL GLASSES CLOSE TO LADDER FOR:

PROVIDE GUIDE-WIRE ANCHOR BAR ON BOTTOM OF SPHERE VERTICALLY BELOW GUIDE-WIRE NOZZLES (PLUMB-LINE) FOR:

ORIENTATE BRACKETS ON EXTERNAL SHELL OF SPHERE (DETAILS A,B AND C) FOR:

ORIENTATE AUTOMATIC TANKGAUGE NOZZLES CLOSE TO LADDER FOR CONNECTIONS: K2,K3,K4

LOCATE MANHOLE (FOR INSERTION OF LEVEL FLOAT WITH O.D.: MM/IN.) CLOSE TO CONNECTION FOR: K3

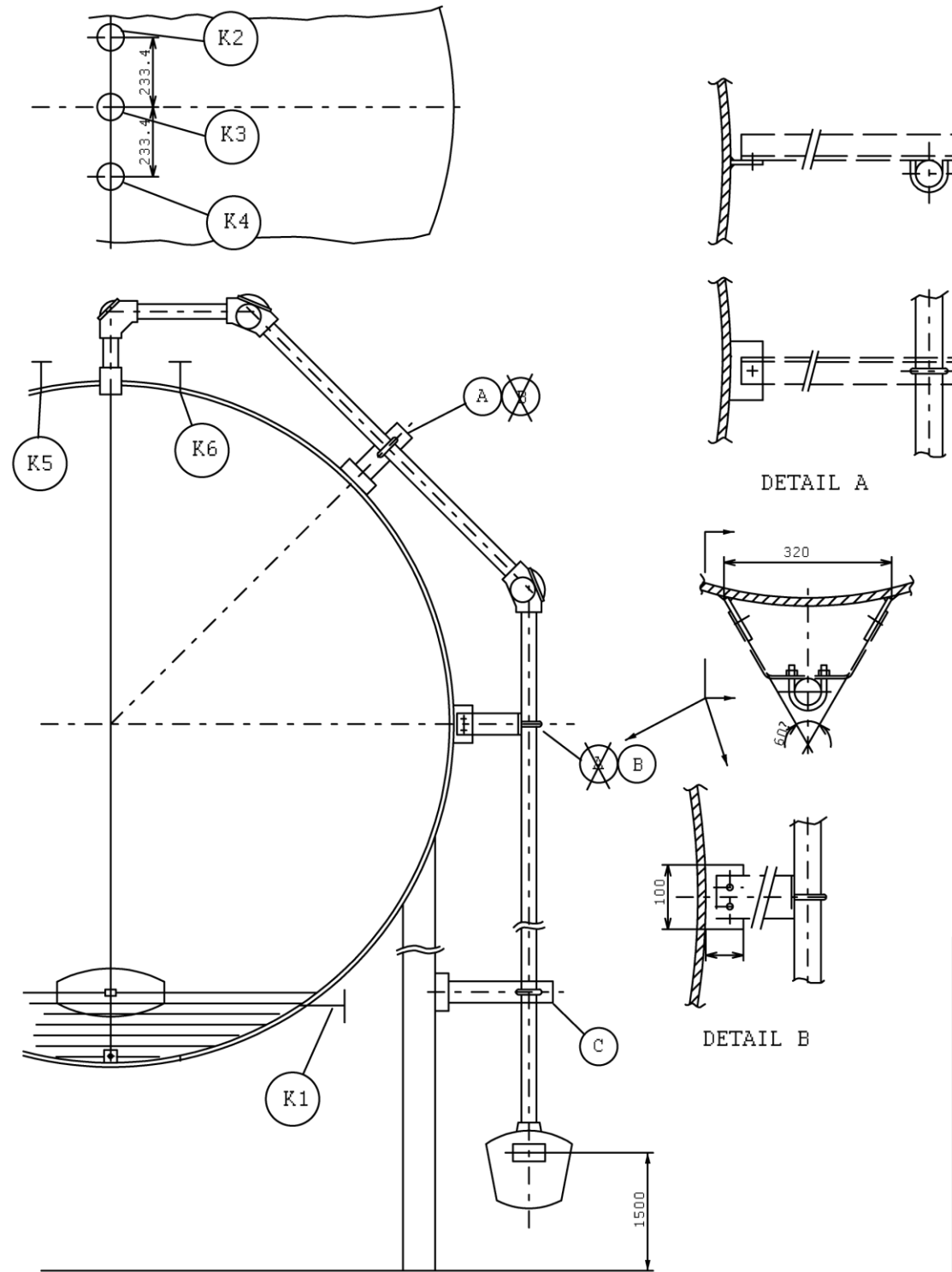
VENDOR OF (FILED ERECTED-) SPHERE TO INSTALL TANKGAUGE SUPPLIED BY OTHERS; APPLICABLE FOR K1,K2,K3 AND DETAILS A,B AND C

CHECK CLEARANCE OF FLOAT WITH SPHERE INTERNALS FOR: K3

PROVIDE FOR LEVEL MEASURING-BASIS PLATE; PLATE TO BE PRECISELY HORIZONTAL AND PLUMB-LINE-VERTICALLY BELOW CONNECTIONS:

SPECIAL-STILLING WELL (SEE SKETCH ) TO BE SUPPLIED BY TANK VENDOR FOR:

CHECK SAFETY AND/OR CUSTOM REGULATIONS FOR REQUIREM OF LADDERS AND RAIL TO REACH FOLLOWING TOP MOUNTED INSTRUMENT CONNECTIONS: K3,K5,K6



DETAIL A

DETAIL C

DETAIL B

NOTE: LOCATE BRACKETS EVENLY OVER SHELL  
 DETAIL A: QUANTITY REQUIRED : 1  
 DETAIL B: QUANTITY REQUIRED : 1  
 DETAIL C: QUANTITY REQUIRED : 1

NOTE: 1. SPHERE MFR. TO COORDINATE WITH INSTR. FILED SUB CONTRACTOR FOR MOUNTING TANK GAUGE.

DESCRIPTION	SIZE	TYPE	RATING	QTY.	REMARKS
K6	4"	R.F.	150#	1	SV
K5	3/4"	SCRWD.	3000 #	1	PI
K4	2"	"	"	1	LI
K3	2"	"	"	1	LI
K2	2"	"	"	1	LI
K1	1 1/2"	R.F.	150 #	1	TW

Iss	Date	By	Description of issue	Ch'k'd	App'd

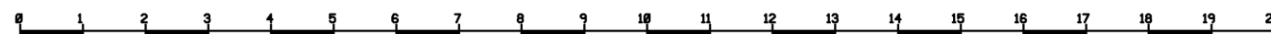
EQUIPMENT DRAWING : /ISSUE:  
 PROCESS SKETCH : /ISSUE:  
 FLOW SHEET : /ISSUE:

THIS SKETCH NOT TO BE USED FOR CONSTRUCTION.

This drawing is not to be used for construction or for ordering material unless dated and signed		Scale /	
Approvals			
Design	Eng'r		
Certified			
Date			

DWG.NO. BNS-3724M sheet 32 Issue A3

GENERAL NOTE:  
 ALL DIMENSIONS IN MM. UNLESS OTHERWISE NOTED.



B  
 8/12-'67