

NOTES ADDITIONAL TO INSTRUMENT CONNECTIONS, ALREADY SHOWN ON SKETCH.

— ACTION BY VESSEL DEPARTMENT
 — ACTION BY PIPING DEPARTMENT

● ○ CHECK CLEARANCE OF THERMOWELLS (DESIGN IS BASED ON) THERMOWELL IMMERSION: AND NOZZLE STAND-OUT:

○ ○ CHECK CLEARANCE FOR INTERNAL LEVEL ALARM BALL-FLOAT (SEE DETAIL A) FOR:

○ ○ CHECK CLEARANCE FOR INTERNAL LEVEL CONTROLLER FLOAT; SPECIAL LARGE SCALE DRAWING TO BE USED FOR CHECKING. (SEE DETAIL B) FOR:

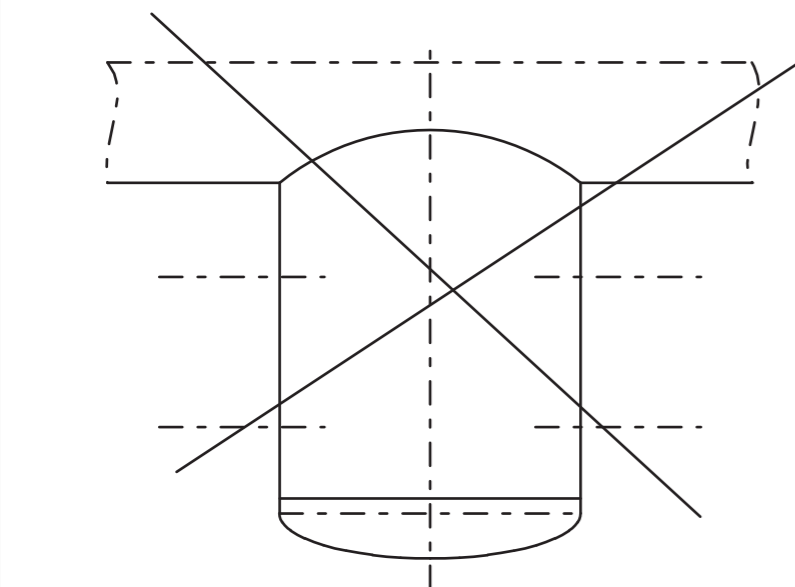
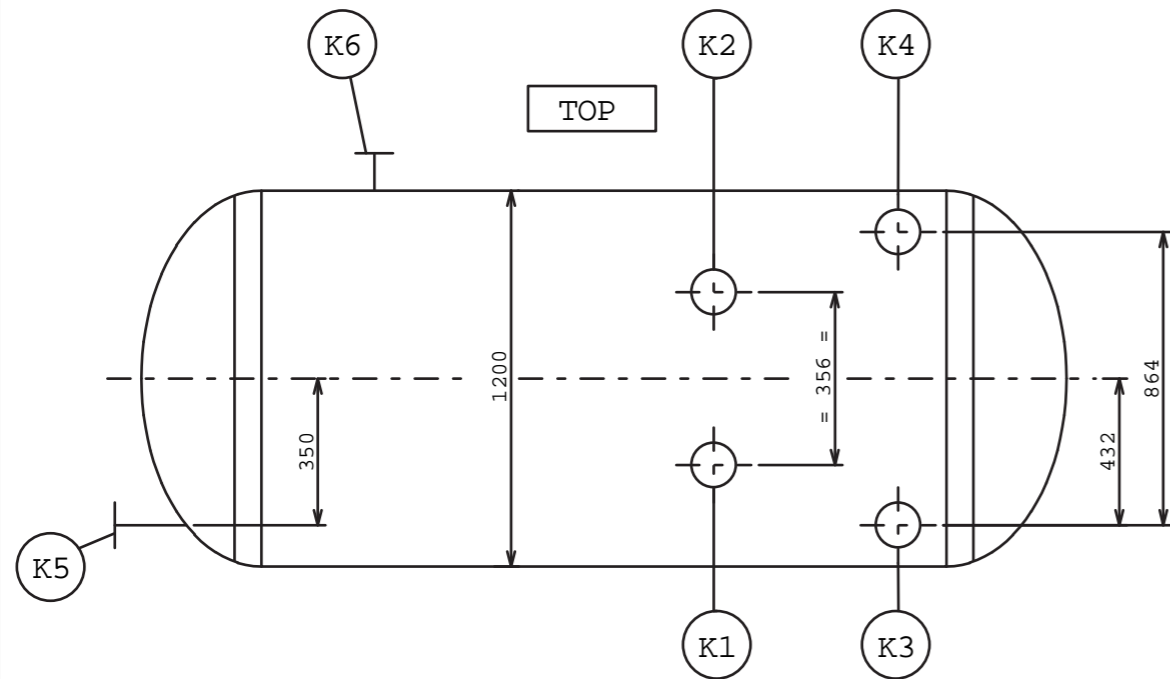
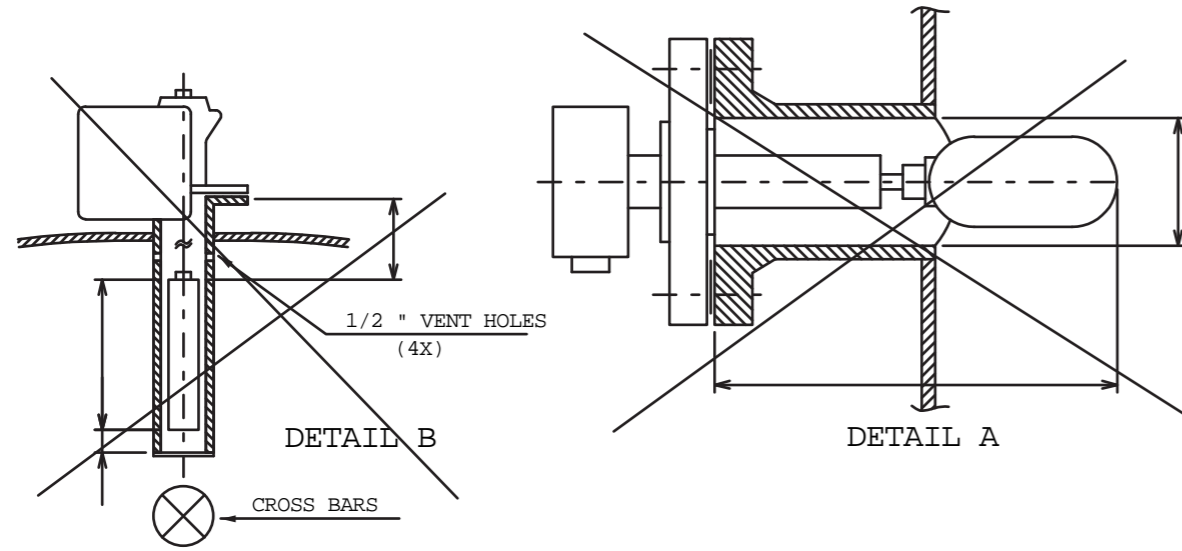
○ ○ STILLING PIPE TO BE PROVIDED BY VESSEL VENDOR FOR: SEE SKETCH:

○ ○ THERMOWELL OF SPECIAL DESIGN SUPPLIED BY VESSEL VENDOR FOR: SEE SKETCH:

○ ○ PROVIDE BRACKET FOR STANDPIPE SUPPORT.

SPECIAL NOTE:

ACTUAL STANDPIPE DESIGN REGARDING CONSTRUCTION OF B RANCHES AND CONNECTIONS TO BE IN ACCORDANCE WITH PIPING SPECIFICATION OF THE PROJECT INVOLVED.



GENERAL NOTE:

ALL DIMENSIONS IN MM., UNLESS OTHERWISE NOTED.

DESCRIPTION	SIZE	TYPE	RATING	QTY.	REMARKS
K6	3/4"	R.F.	150#	1	PI
K5	1 1/2"			1	TW
K4	3/4"			1	LG
K3	3/4"			1	LG
K2	2"			1	LC
K1	2"			1	LC

B
8/12-'67

Sheet no. changed				
Certified				
Iss	Date	By	Description of issue	Ch'k'd App'd

EQUIPMENT DRAWING : /ISSUE:
 PROCESS SKETCH : /ISSUE:
 FLOW SHEET : /ISSUE:

THIS SKETCH NOT TO BE USED FOR CONSTRUCTION.

BN-DG-K1-14.doc	Scale /	
	Approvals	
	Design	Eng'r
www.red-bag.com		

