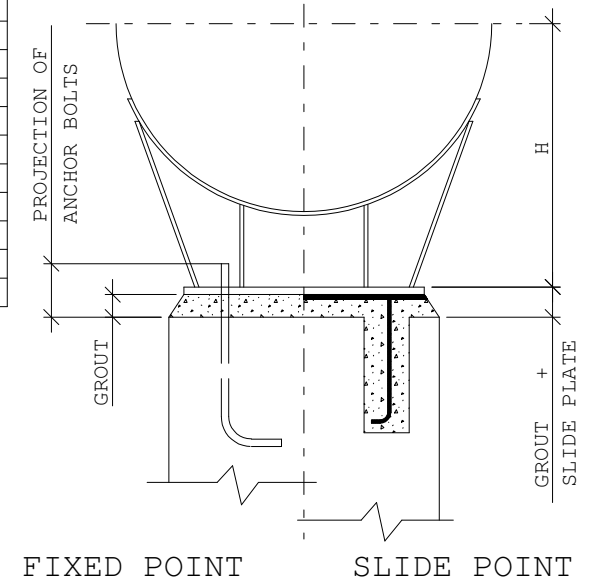
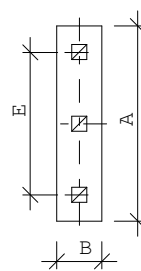
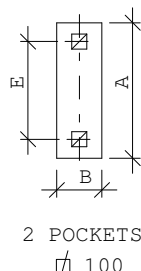
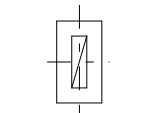
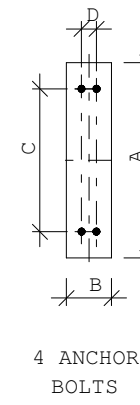
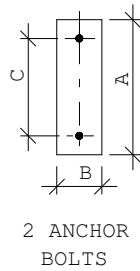


NOTES

1. ALL DIMENSIONS ARE IN mm.
2. THIS STANDARD IS BASED ON THE FOLLOWING VESSEL STANDARDS FOR SADDLES AND SLIDE PLATES:
BN-DS-M1 ISSUE 5
BN-DS-M2 ISSUE 2
BN-DS-M3 ISSUE 2
BN-DS-T11 ISSUE 5
3. UNIT SIZE OR O.D. VESSEL AS SPECIFIED ON THE VESSEL DRAWING. FOR INTERMEDIATE DIAMETERS THE DIMENSION FOR THE LARGER SIZE IS USED; CHECK ON THE VESSEL DRAWING.
4. SADDLE HEIGHT "H" AS SPECIFIED ON THE VESSEL DRAWING.
5. PROJECTION OF ANCHOR BOLTS IS GIVEN FROM TOP OF CONCRETE, WITH ALLOWANCE FOR 2 NUTS. ANCHOR BOLTS AS PER STANDARD BN-ES-J1.



| FIXED AND SLIDE POINT | | FIXED POINT | | | | | SLIDE POINT | | | | O.D. | | UNIT SIZE | | |
|-----------------------|------|-------------|-----|------|-----|--------------|-------------|-------|-------------------------------|-------------------------------|--------------|---------------|-------------|-------|-----------|
| UNIT SIZE | O.D. | A | B | C | D | ANCHOR BOLTS | PROJ. | GROUT | * MAY BE COMBINED TO 1 POCKET | E | POCKET DEPTH | GROUT+ SL.PL. | SLIDE PLATE | O.D. | UNIT SIZE |
| 6 | | 350 | 250 | 90 | | 2 x M20 | 100 | 35 | * MAY BE COMBINED TO 1 POCKET | * 110 | 150 | 35 | SP 1 | | 6 |
| 8 | | 450 | 250 | 100 | | 2 x M20 | 105 | 35 | | * MAY BE COMBINED TO 1 POCKET | * 170 | 150 | 35 | SP 2 | |
| 10 | | 500 | 250 | 150 | | 2 x M20 | 105 | 35 | * MAY BE COMBINED TO 1 POCKET | | 210 | 150 | 35 | SP 3 | |
| 12 | | 500 | 250 | 180 | | 2 x M20 | 105 | 35 | | * MAY BE COMBINED TO 1 POCKET | 250 | 150 | 35 | SP 4 | |
| 14 | | 550 | 250 | 180 | | 2 x M20 | 110 | 40 | * MAY BE COMBINED TO 1 POCKET | | 270 | 150 | 40 | SP 5 | |
| 16 | 400 | 550 | 250 | 200 | | 2 x M20 | 110 | 40 | | * MAY BE COMBINED TO 1 POCKET | 300 | 150 | 40 | SP 6 | 400 |
| 18 | 450 | 600 | 250 | 260 | | 2 x M20 | 110 | 40 | * MAY BE COMBINED TO 1 POCKET | | 340 | 150 | 40 | SP 7 | 450 |
| 19 | | 600 | 250 | 270 | | 2 x M20 | 110 | 40 | | * MAY BE COMBINED TO 1 POCKET | 350 | 150 | 40 | SP 8 | |
| 20 | 500 | 650 | 250 | 280 | | 2 x M24 | 120 | 40 | * MAY BE COMBINED TO 1 POCKET | | 380 | 150 | 40 | SP 9 | 500 |
| 21 | | 650 | 250 | 290 | | 2 x M24 | 120 | 40 | | * MAY BE COMBINED TO 1 POCKET | 390 | 150 | 40 | SP 10 | |
| 22 | 550 | 650 | 250 | 300 | | 2 x M24 | 120 | 40 | * MAY BE COMBINED TO 1 POCKET | | 410 | 150 | 40 | SP 11 | 550 |
| 23 | | 700 | 250 | 310 | | 2 x M24 | 120 | 40 | | * MAY BE COMBINED TO 1 POCKET | 420 | 150 | 40 | SP 12 | |
| 24 | 600 | 700 | 250 | 330 | | 2 x M24 | 120 | 40 | * MAY BE COMBINED TO 1 POCKET | | 430 | 150 | 40 | SP 13 | 600 |
| 25 | | 700 | 250 | 350 | | 2 x M24 | 120 | 40 | | * MAY BE COMBINED TO 1 POCKET | 460 | 150 | 40 | SP 14 | |
| 26 | 650 | 750 | 250 | 360 | | 2 x M24 | 120 | 40 | * MAY BE COMBINED TO 1 POCKET | | 490 | 150 | 40 | SP 15 | 650 |
| 27 | | 750 | 250 | 380 | | 2 x M24 | 120 | 40 | | * MAY BE COMBINED TO 1 POCKET | 500 | 150 | 40 | SP 16 | |
| 28 | 700 | 800 | 250 | 400 | | 2 x M24 | 120 | 40 | * MAY BE COMBINED TO 1 POCKET | | 530 | 150 | 40 | SP 17 | 700 |
| 29 | | 800 | 250 | 410 | | 2 x M24 | 120 | 40 | | * MAY BE COMBINED TO 1 POCKET | 550 | 150 | 40 | SP 18 | |
| 30 | 750 | 850 | 250 | 430 | | 2 x M24 | 120 | 40 | * MAY BE COMBINED TO 1 POCKET | | 570 | 150 | 40 | SP 19 | 750 |
| 31 | | 850 | 250 | 460 | | 2 x M24 | 120 | 40 | | * MAY BE COMBINED TO 1 POCKET | 590 | 150 | 40 | SP 20 | |
| 32 | 800 | 850 | 250 | 480 | | 2 x M24 | 120 | 40 | * MAY BE COMBINED TO 1 POCKET | | 600 | 150 | 40 | SP 21 | 800 |
| 33 | | 900 | 250 | 490 | | 2 x M24 | 120 | 40 | | * MAY BE COMBINED TO 1 POCKET | 620 | 150 | 40 | SP 22 | |
| 34 | 850 | 900 | 250 | 510 | | 2 x M24 | 120 | 40 | * MAY BE COMBINED TO 1 POCKET | | 640 | 150 | 40 | SP 23 | 850 |
| 35 | | 950 | 250 | 530 | | 2 x M24 | 120 | 40 | | * MAY BE COMBINED TO 1 POCKET | 660 | 150 | 40 | SP 24 | |
| 36 | 900 | 950 | 250 | 560 | | 2 x M24 | 120 | 40 | * MAY BE COMBINED TO 1 POCKET | | 680 | 150 | 40 | SP 25 | 900 |
| 37 | | 950 | 250 | 570 | | 2 x M24 | 120 | 40 | | * MAY BE COMBINED TO 1 POCKET | 700 | 150 | 40 | SP 26 | |
| 38 | 950 | 1000 | 250 | 590 | | 2 x M24 | 125 | 40 | * MAY BE COMBINED TO 1 POCKET | | 720 | 150 | 40 | SP 27 | 950 |
| 39 | | 1000 | 250 | 600 | | 2 x M24 | 125 | 40 | | * MAY BE COMBINED TO 1 POCKET | 740 | 150 | 40 | SP 28 | |
| | 1000 | 700 | 350 | 450 | 120 | 4 x M24 | 120 | 40 | * MAY BE COMBINED TO 1 POCKET | | 440 | 300 | 40 | SP 29 | 1000 |
| | 1050 | 750 | 350 | 480 | 120 | 4 x M24 | 120 | 40 | | * MAY BE COMBINED TO 1 POCKET | 470 | 300 | 40 | SP 30 | 1050 |
| | 1100 | 800 | 350 | 510 | 120 | 4 x M24 | 120 | 40 | * MAY BE COMBINED TO 1 POCKET | | 500 | 300 | 40 | SP 31 | 1100 |
| | 1150 | 800 | 350 | 540 | 120 | 4 x M24 | 120 | 40 | | * MAY BE COMBINED TO 1 POCKET | 530 | 300 | 40 | SP 32 | 1150 |
| | 1200 | 850 | 350 | 570 | 120 | 4 x M24 | 120 | 40 | * MAY BE COMBINED TO 1 POCKET | | 560 | 300 | 40 | SP 33 | 1200 |
| | 1300 | 900 | 350 | 630 | 120 | 4 x M24 | 120 | 40 | | * MAY BE COMBINED TO 1 POCKET | 620 | 300 | 40 | SP 34 | 1300 |
| | 1400 | 950 | 350 | 690 | 120 | 4 x M24 | 120 | 40 | * MAY BE COMBINED TO 1 POCKET | | 680 | 300 | 40 | SP 35 | 1400 |
| | 1500 | 1000 | 350 | 750 | 120 | 4 x M24 | 120 | 40 | | * MAY BE COMBINED TO 1 POCKET | 740 | 300 | 40 | SP 36 | 1500 |
| | 1600 | 1100 | 350 | 820 | 120 | 4 x M24 | 120 | 40 | * MAY BE COMBINED TO 1 POCKET | | 810 | 300 | 40 | SP 37 | 1600 |
| | 1700 | 1150 | 350 | 890 | 120 | 4 x M24 | 120 | 40 | | * MAY BE COMBINED TO 1 POCKET | 880 | 300 | 40 | SP 38 | 1700 |
| | 1800 | 1200 | 350 | 950 | 120 | 4 x M24 | 120 | 40 | * MAY BE COMBINED TO 1 POCKET | | 940 | 300 | 40 | SP 39 | 1800 |
| | 1900 | 1300 | 350 | 1020 | 120 | 4 x M24 | 120 | 40 | | * MAY BE COMBINED TO 1 POCKET | 1010 | 300 | 40 | SP 40 | 1900 |
| | 2000 | 1350 | 400 | 1060 | 150 | 4 x M24 | 130 | 45 | * MAY BE COMBINED TO 1 POCKET | | 1080 | 300 | 45 | SP 41 | 2000 |
| | 2100 | 1450 | 400 | 1120 | 150 | 4 x M24 | 130 | 45 | | * MAY BE COMBINED TO 1 POCKET | 1150 | 300 | 45 | SP 42 | 2100 |
| | 2200 | 1500 | 400 | 1190 | 150 | 4 x M24 | 130 | 45 | * MAY BE COMBINED TO 1 POCKET | | 1220 | 300 | 45 | SP 43 | 2200 |
| | 2300 | 1550 | 400 | 1220 | 150 | 4 x M24 | 130 | 45 | | * MAY BE COMBINED TO 1 POCKET | 1290 | 300 | 45 | SP 44 | 2300 |
| | 2400 | 1650 | 400 | 1280 | 150 | 4 x M24 | 130 | 45 | * MAY BE COMBINED TO 1 POCKET | | 1350 | 300 | 45 | SP 45 | 2400 |
| | 2500 | 1700 | 400 | 1350 | 150 | 4 x M24 | 130 | 45 | | * MAY BE COMBINED TO 1 POCKET | 1420 | 300 | 45 | SP 46 | 2500 |
| | 2600 | 1750 | 400 | 1420 | 150 | 4 x M24 | 130 | 45 | * MAY BE COMBINED TO 1 POCKET | | 1490 | 300 | 45 | SP 47 | 2600 |
| | 2700 | 1850 | 400 | 1490 | 150 | 4 x M24 | 130 | 45 | | * MAY BE COMBINED TO 1 POCKET | 1560 | 300 | 45 | SP 48 | 2700 |
| | 2800 | 1900 | 400 | 1560 | 150 | 4 x M24 | 130 | 45 | * MAY BE COMBINED TO 1 POCKET | | 1630 | 300 | 45 | SP 49 | 2800 |
| | 2900 | 2000 | 400 | 1630 | 150 | 4 x M24 | 130 | 45 | | * MAY BE COMBINED TO 1 POCKET | 1700 | 300 | 45 | SP 50 | 2900 |
| | 3000 | 2050 | 400 | 1700 | 150 | 4 x M24 | 130 | 45 | * MAY BE COMBINED TO 1 POCKET | | 1770 | 300 | 45 | SP 51 | 3000 |
| | 3100 | 2100 | 400 | 1770 | 150 | 4 x M24 | 130 | 45 | | * MAY BE COMBINED TO 1 POCKET | 1840 | 300 | 45 | SP 52 | 3100 |
| | 3200 | 2200 | 400 | 1830 | 150 | 4 x M24 | 130 | 45 | * MAY BE COMBINED TO 1 POCKET | | 1900 | 300 | 45 | SP 53 | 3200 |
| | 3300 | 2250 | 400 | 1900 | 150 | 4 x M24 | 130 | 45 | | * MAY BE COMBINED TO 1 POCKET | 1970 | 300 | 45 | SP 54 | 3300 |
| | 3400 | 2300 | 400 | 1970 | 150 | 4 x M24 | 130 | 45 | * MAY BE COMBINED TO 1 POCKET | | 2040 | 300 | 45 | SP 55 | 3400 |
| | 3500 | 2400 | 400 | 2040 | 150 | 4 x M24 | 130 | 45 | | * MAY BE COMBINED TO 1 POCKET | 2070 | 300 | 45 | SP 56 | 3500 |
| | 3600 | 2450 | 400 | 2100 | 150 | 4 x M24 | 130 | 45 | * MAY BE COMBINED TO 1 POCKET | | 2170 | 300 | 45 | SP 57 | 3600 |
| | 3700 | 2550 | 450 | 2170 | 180 | 4 x M24 | 140 | 50 | | * MAY BE COMBINED TO 1 POCKET | 2240 | 300 | 50 | SP 58 | 3700 |
| | 3800 | 2600 | 450 | 2240 | 180 | 4 x M24 | 140 | 50 | * MAY BE COMBINED TO 1 POCKET | | 2310 | 300 | 50 | SP 59 | 3800 |
| | 3900 | 2750 | 450 | 2370 | 180 | 4 x M24 | 140 | 50 | | * MAY BE COMBINED TO 1 POCKET | 2440 | 300 | 50 | SP 60 | 3900 |
| | 4000 | 2800 | 450 | 2450 | 180 | 4 x M24 | 140 | 50 | * MAY BE COMBINED TO 1 POCKET | | 2520 | 300 | 50 | SP 61 | 4000 |



| | | | | |
|-----|------|--------------------|----------------------|--------------|
| 4 | BS | COMPLETELY REVISED | | |
| Iss | Date | By | Description of issue | Ch'k'd App'd |

STANDARD FOR CONCRETE PLINTHS FOR HORIZONTAL EQUIPMENT

| | | | |
|--|--------|-----------|--|
| This drawing is not to be used for construction or for ordering material unless dated and signed | | Scale | |
| Certified _____ | | Approvals | |
| Date _____ | Design | Eng'r | |

